



Drobo 5D & 5Dt

Redefining Professional Storage. Again.

Redesigned from the ground up to meet the data storage needs of today's media creators and demanding professionals, Drobo 5D builds on the fully automated functionality of previous Drobo arrays by adding blazingfast performance. Leveraging cutting-edge Thunderbolt 2 and USB 3.0 connectivity — along with the innovative use of solid state drives (SSDs) — Drobo 5D is the highest performing personal storage array on the planet.

Not only is Drobo 5D fast, but it's easy-to-use, expandable, flexible, and protected — exactly what's expected from a Drobo. You can safely store and edit photos and videos as well as store and back up personal data.

Data Protection and Expandability Made Simple

Built on award-winning BeyondRAID™ technology with single-or dual-drive redundancy, Drobo 5D protects your data without any user interaction, even in the event of multiple drive failures.

Drives can be added or hot-swapped on-the-fly for storage expansion with zero downtime. If you're running low on space, the lights on the front tell you what to do. Just add a drive in an empty bay or remove a smaller drive and replace it with a larger one.

Power of Thunderbolt 2 and Flexibility of USB

Thunderbolt 2 I/O technology provides performance that's up to 5x faster than the previous generation Drobo S. This allows you to move large amounts of data in a fraction of the time it used to take.

Drobo 5D is equipped with dual Thunderbolt 2 ports for daisy chaining. Connect up to six Thunderbolt devices and/or a non-Thunderbolt monitor at the end of the chain. With six Drobo 5D arrays in a chain, you can have up to 300

TB of usable capacity. And, the bi-directional 20 Gb/s performance of Thunderbolt 2 allows all devices in the chain to achieve maximum throughput.

Drobo is the only storage array that offers Thunderbolt 2 AND USB 3.0. This latest generation of USB also offers high-performance connectivity and is backward compatible with any computer running qualified versions of Mac OS X or Windows.

Enhanced Time Machine Support

Apple's Time Machine can consume all of the capacity of an external storage system without a simple way to set capacity limits. Utilizing Drobo Dashboard the new Drobo allows users to easily allocate a specific amount of capacity to be dedicated for backups and preserves the remaining space for data storage.

Capacity AND Performance

Data-Aware Caching technology, usually reserved for business-class storage solutions, is also available in this desktop Drobo. It intelligently uses the high-performance flash in SSDs to accelerate performance of the storage array, allowing applications such as Adobe Premiere and Apple Aperture fast access to data.

If getting the fastest performance possible is your thing, you can also load up every drive bay with SSDs. Drobo gives you the flexibility to choose.

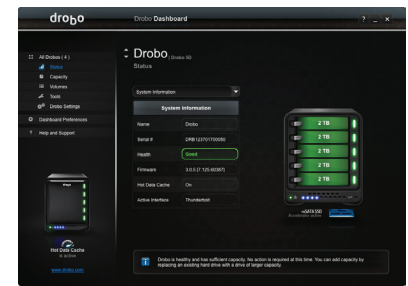
Power Protecting Your Critical Data

Drobo doesn't just protect you from a drive failure, but also from potential data loss after a power outage. Often found only in arrays that cost tens of thousands of dollars, Drobo 5D includes a battery that protects all data in memory, or cache, that is, data on its way to the drives.

When power spontaneously goes away, the battery keeps the Drobo alive long enough for the

Drobo Dashboard

Drobo Dashboard is the single tool used to centrally manage all of your Drobo devices. Drobo Dashboard displays status as if all of your Drobos were right in front of you with the same status lights and capacity gauge that are on the front panel. All administration tasks are a single click away.



data to be written to nonvolatile storage. The battery recharges itself and lasts for the life of the product.

Designed for You

Drobo devices have always been space efficient and the Drobo 5D is no exception. It was designed to provide high capacity without taking up a lot of your valuable desk space. It is compact because of Drobo's unique carrier-less drive bay design, allowing drives to be installed very close to each other. Drobo 5D is also significantly quieter than previous generation Drobos due to its tuned, large, variable-speed cooling fan

Drobo 5Dt

The Drobo 5Dt includes 3-Year DroboCare coverage free of charge with product registration. Drobo 5Dt comes with a Thunderbolt 2 cable and an mSATA card to enable our patented Drobo Accelerator Caching technology right out of the box..

Specifications

Connectivity	<ul style="list-style-type: none"> – 2 x Thunderbolt 2 ports; second port for daisy chaining Thunderbolt devices (Mac OS X only) – 1 x USB 3.0 port 	Hardware Features	<ul style="list-style-type: none"> – Carrier-less drive bays – Power fail protection with internal battery – Metal chassis and cover – Kensington Lock Port for security (lock not included)
Drives and Expansion	<ul style="list-style-type: none"> – Up to five (5) 3.5" SATA II/III hard disk drives or solid state drives (sold separately). – One (1) mSATA solid state drive in the Drobo Accelerator Bay for increased performance (sold separately in the Drobo 5D, and included in the Drobo 5Dt). – Drives of any manufacturer, capacity, spindle speed and/or cache can be used. No carriers or tools required. – Expandable by adding drives or hot-swapping drives with larger ones. 	Additional Software Features	<ul style="list-style-type: none"> – Hot Data Caching – Drive Spin Down – Dim Lights – OS X Time Machine Support
BeyondRAID Features	<ul style="list-style-type: none"> – Thin Provisioning – Instant Expansion – Mixed Drive Size Utilization – Automatic Protection Levels – Single or Dual Disk Redundancy – Virtual Hot Spare – Data Aware – Drive Re-ordering 	Warranty	<ul style="list-style-type: none"> – One (1) year warranty in the US or outside the EU or two (2) year warranty in the EU
Management	<ul style="list-style-type: none"> – Drive bay indicator lights, capacity gauge, status lights – Drobo Dashboard version 2.8.1 or later 	Size and Weight	<ul style="list-style-type: none"> – Desktop Form Factor – Width: 5.9 in (150.3 mm) – Height: 7.3 in (185.4 mm) – Depth: 10.3 in (262.3 mm) – Weight: 8.5 lb (3.9 kg) without hard drives, power supply or packaging
Operating System Support	<ul style="list-style-type: none"> – Mac OS X 10.9 and higher – Windows 10, 32 and 64 bit – Windows 8/8.1 32 and 64 bit – Windows 7 32 and 64 bit 	Power and Cooling	<ul style="list-style-type: none"> – External Power Supply: <ul style="list-style-type: none"> • AC Input – 100-240VAC~2A, 50-60Hz • DC Output – 12V, 12.5A, 150W max – Fixed, 120mm variable speed cooling fan
File Systems Supported	<ul style="list-style-type: none"> – Mac OS X: HFS+ – Windows: NTFS 	Box Contents	<ul style="list-style-type: none"> – Drobo 5D – 6 ft (1.8 m) USB 3.0 cable – 6 ft (1.8 m) power cord with power supply – Quick Start Guide – Drobo 5Dt also includes: – mSATA card – 3.3 ft (1 m) Thunderbolt 2 cable – DroboCare Insert Card (3 year DroboCare)

How to Choose the Right Drive

Drobo gives you the flexibility to use a wide variety of drive types and capacities. To find out which drive is right, visit www.drobo.com/products/choose-drive.

More Information

Visit the Thunderbolt technology site to learn more about this exciting new way to connect devices at <https://thunderbolttechnology.net>.

For more on Drobo's innovative technology, visit www.drobo.com/how-it-works.

Read about Drobo BeyondRAID at www.drobo.com/how-it-works/beyond-raid.



2540 Mission College Blvd, Santa Clara, CA 95054
www.drobo.com • +1.408.454.4200