

Drobo Mini



Small Is the New Big: The world's smallest, most advanced storage array

It's a Drobo, so by definition it's easy-to-use. Now it's also the fastest portable storage array, with cutting-edge Thunderbolt and USB 3.0 connectivity and innovative use of solid state drives (SSDs).

Whether you're working at your desktop, shooting and editing photos or videos onsite, or traveling to the next location, it's the world's first high-performance and protected portable storage array. So now you can take and access your valuable digital assets wherever you go.

Amazingly Mini

Drobo Mini has everything that's in the high-capacity Drobo 5D in a package that is compact and portable. Made of a cutting-edge metallic carbon fiber with a soft-touch rubberized finish, Drobo Mini is small, rugged, and feels as cool as it looks. From the modern materials to the wraparound light indicators to the drive bay design, Mini is truly big storage in a small box.

Weighing in at 3 pounds fully loaded with drives, you can now carry up to 4.5TB¹ of usable and protected capacity in your travel bag. To make Drobo Mini as portable as possible, there's an optional carrying case.

¹ 2TB drives are available today. When larger drives become available, you can replace for greater capacity.

Data Protection and Expandability Made Simple

Built on award-winning BeyondRAID™ technology with single- or dual-drive redundancy, Drobo Mini protects your data without any user interaction, even in the event of multiple drive failures.

Drives can be added or hot-swapped on-the-fly for storage expansion with zero downtime. If you're running low on space, the lights on the front tell you what to do. Just add a drive in an

empty bay or remove a smaller drive and replace it with a larger one.

Enhanced Time Machine Support

Apple's Time Machine can consume all of the capacity of an external storage system without a simple way to set capacity limits. Utilizing Drobo Dashboard the new Drobo allows users to easily allocate a specific amount of capacity to be dedicated for backups and preserves the remaining space for data storage.

Power of Thunderbolt and Flexibility of USB

Thunderbolt I/O technology provides performance that no personal storage has been able to achieve, especially one that's portable. This allows you to move large amounts of data in a fraction of the time it used to take.

Drobo Mini is equipped with dual Thunderbolt ports for daisy chaining. Connect up to six Thunderbolt devices and/or a non-Thunderbolt monitor at the end of the chain. This allows even the most portable laptop computers access to high-performance storage while retaining connectivity to other devices and an external monitor.

Drobo is the only storage array that offers Thunderbolt and USB 3.0. The version of USB also offers high-performance connectivity and is backward compatible with computers running qualified versions of Mac OS X or Windows.

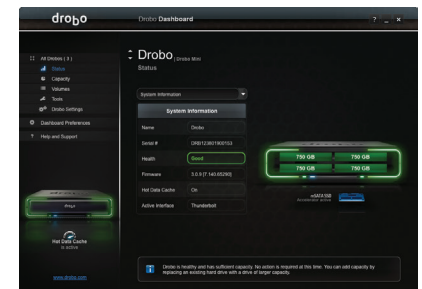
Capacity AND Performance

Data-Aware Tiering technology, usually reserved for business-class storage solutions, is also available in this portable Drobo. It intelligently uses the high-performance flash in SSDs to accelerate performance of the storage array, allowing applications such as Adobe Premiere

First Drobo with 2.5" Drives

Drobo Mini takes 2.5" drives – that is what makes it portable. Four hot-swappable drive bays support drives of any capacity. No carriers or screws are needed to insert drives into a Drobo and the Drobo Mini is no different. An innovative new design allows drives to click in and out like a ballpoint pen.

Since 2.5" drives are primarily used in laptop computers, they're designed to be portable. Because of this, you can pick up and move Drobo Mini around with confidence.



and Apple Aperture fast access to data.

To keep capacity of the Drobo at a maximum, the Drobo Accelerator Bay accepts an industry standard mSATA SSD, leaving all four 2.5" drive bays available for high capacity HDDs.

Power Protecting Your Critical Data

Drobo doesn't just protect you from a drive failure, but also from potential data loss after a power outage. Drobo Mini includes a battery that protects all data in memory, or cache, that is, data on its way to the drives.

When power spontaneously goes away, the battery keeps the Drobo alive long enough for the data to be written to non-volatile storage. The battery recharges itself and is designed to last for the life of the product.

Specifications

| | | | |
|---------------------------------|--|-------------------------------------|---|
| Connectivity | <ul style="list-style-type: none"> – 2 x Thunderbolt ports; second port for daisy chaining Thunderbolt devices (Mac OS X only) – 1 x USB 3.0 port | Hardware Features | <ul style="list-style-type: none"> – Carrier-less drive bays – Power fail protection – Kensington Lock Port for security (lock not included) |
| Drives and Expansion | <ul style="list-style-type: none"> – Up to four (4) 2.5" SATA I/II/III hard disk drives or solid state drives – 7 mm and 9.5 mm in height (sold separately). – One (1) mSATA solid state drive in the Drobo Accelerator Bay for increased performance (sold separately). – Drives of any manufacturer, capacity, spindle speed and/or cache can be used. No carriers or tools required. – Expandable by adding drives or hot-swapping drives with larger ones. | Additional Software Features | <ul style="list-style-type: none"> – Hot Data Caching – Drive Spin Down – Dim Lights – OS X Time Machine Support |
| BeyondRAID Features | <ul style="list-style-type: none"> – Thin Provisioning – Instant Expansion – Mixed Drive Size Utilization – Automatic Protection Levels – Single or Dual Disk Redundancy – Virtual Hot Spare – Data Aware – Drive Re-ordering | Warranty | <ul style="list-style-type: none"> – One (1) year warranty in the US or outside the EU or two (2) year warranty in the EU |
| Management | <ul style="list-style-type: none"> – Drive bay indicator lights, capacity gauge, status lights – Drobo Dashboard version 2.3 or later | Size and Weight | <ul style="list-style-type: none"> – Desktop Form Factor – Width: 7.3 in (187.2 mm) – Height: 1.8 in (44.6 mm) – Depth: 7.1 in (180 mm) – Weight: 2.2 lb (1 kg) without hard drives, power supply or packaging |
| Operating System Support | <ul style="list-style-type: none"> – Mac OS X 10.7 and higher – Windows 10, 32 and 64 bit – Windows 8/8.1 32 and 64 bit – Windows 7 32 and 64 bit | Power and Cooling | <ul style="list-style-type: none"> – External Power Supply: <ul style="list-style-type: none"> • AC Input – 100-240VAC~2A, 50-60Hz • DC Output – 12V, 4.16A, 50W max – Dual, fixed, variable speed cooling fans |
| File System Options | <ul style="list-style-type: none"> – Mac OS X: HFS+ – Windows: NTFS | Box Contents | <ul style="list-style-type: none"> – Drobo Mini – 3.3 ft (1 m) USB 3.0 cable – 7.5 ft (2.2 m) power cord with power supply – Quick Start Guide |
| Optional Accessories | <ul style="list-style-type: none"> – Drobo Mini Carrying Case | | |

How to Choose the Right Drive

Drobo gives you the flexibility to use a wide variety of drive types and capacities. To find out which drive is right, visit www.drobo.com/products/choose-drive.

More Information

Visit the Thunderbolt technology site to learn more about this exciting new way to connect devices at <https://thunderbolttechnology.net>.

For more on Drobo's innovative technology, visit www.drobo.com/how-it-works.

Read about Drobo BeyondRAID at www.drobo.com/how-it-works/beyond-raid.



2460 North First Street, San Jose, CA 95131
www.drobo.com • 1.866.997.6268