



## Drobo 5N

### The Faster, Easier Drobo for Your Network

The Drobo 5N was designed with one purpose in mind: to deliver the best ever experience sharing storage and accessing data. From the moment you plug it in and it is instantly accessible on your network, you'll know there's nothing like it. The Drobo 5N is perfect for any connected home, home office, or small office environment needing a simple, safe device for sharing and backing up data over the network.

Not only is Drobo 5N fast, but it's easy-to-use, expandable, flexible, and protected—exactly what's expected from a Drobo. You can safely store and edit photos, videos, and audio files as well as store and back up all the computers on your network.

### Data Protection and Expandability Made Simple

Built on award-winning BeyondRAID™ technology with single- or dual-drive redundancy, Drobo 5N protects your data without any user interaction, even in the event of multiple drive failures. And like all Drobo products, it's fast and easy to set up and no software configuration required to have accessible storage on your network.

Drives can be added or hot-swapped on-the-fly for storage expansion with zero downtime. Just add a drive in an empty bay or remove a smaller drive and replace it with a larger one, when needed.

### High-Speed Connectivity

The Drobo 5N is equipped with a single Gigabit Ethernet port for network connectivity and connects directly to your network to make sharing your data easy. Just plug it into any switch or wireless router and you're ready to go. You can even connect the Drobo 5N directly to the Ethernet port on your computer without having to configure any settings.

### Capacity AND Performance

It intelligently uses the high-performance SSDs to accelerate performance of the storage array, allowing applications such as Adobe Lightroom and Apple iPhoto or iTunes fast access to data. If getting the fastest performance possible is your thing, you can also load up every drive bay with SSDs. Drobo gives you the flexibility to choose.

### The myDrobo Platform

The myDrobo platform extends the functionality of Drobo NAS devices by providing a secure and fully end-to-end encrypted path to selected Drobo Apps.

The DroboAccess iOS and Android app allows Drobo NAS owners to access their data anywhere, anytime through a secure and encrypted network. This allows Drobo consumers and SMBs to quickly and easily setup their own private cloud storage solution with the ability to view documents from a web browser or from the DroboAccess mobile app.

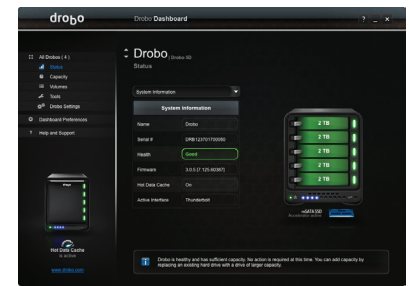
DroboPix app allows owners to easily and automatically upload their photos and videos from their Android or iOS device to a network Drobo. The files are automatically uploaded over Wi-Fi and are securely backed up and protected on a Drobo.

### Power Protecting Your Critical Data

Drobo doesn't just protect you from a drive failure, but also from potential data loss after a power outage. Drobo 5N includes a battery that protects all data in memory, or cache, that is, data on its way to the drives. When power spontaneously goes away, the battery keeps the Drobo alive long enough for the data to be written to non-volatile storage.

### Drobo Dashboard

Drobo Dashboard is the single tool used to centrally manage all of your Drobo devices. Drobo Dashboard displays status as if all of your Drobos were right in front of you with the same status lights and capacity gauge that are on the front panel. All administration tasks are a single click away.



### Centralized Backup for Your Entire Network

The Drobo 5N enables network backup for Mac and Windows users. If you're backing up your Windows 8 or 10 computer to your Drobo, File History is supported. The Drobo 5N also delivers the most seamless support for OS X Time Machine of any network storage system on the market today. Using Time Machine with Drobo 5N is as easy as one click in Drobo Dashboard.

### Designed for You

Drobo devices have always been space efficient and the Drobo 5N is no exception. It was designed from the ground up to provide very high capacity without taking up a lot of your valuable desk space. It is compact because of Drobo's unique carrierless drive-bay design, allowing drives to be installed very close to each other.

Drobo 5N is also the quietest Drobo ever due to its tuned, large, variable-speed cooling fan.

## Specifications

<b>Connectivity</b>	<ul style="list-style-type: none"> <li>– 1 x Gigabit Ethernet port</li> </ul>	<b>Warranty</b>	<ul style="list-style-type: none"> <li>– Two (2) year warranty</li> </ul>
<b>Drives and Expansion</b>	<ul style="list-style-type: none"> <li>– Up to five (5) 3.5" SATA II/III hard disk drives or solid state drives (sold separately).</li> <li>– One (1) mSATA solid state drive in the Drobo Accelerator Bay for increased performance (sold separately).</li> <li>– Drives of any manufacturer, capacity, spindle speed and/or cache can be used. No carriers or tools required.</li> <li>– Expandable by adding drives or hot-swapping drives with larger ones.</li> </ul>	<b>Additional Software Features</b>	<ul style="list-style-type: none"> <li>– Hot Data Caching</li> <li>– DroboApps</li> <li>– myDrobo compatible</li> <li>– Drive Spin Down</li> <li>– Dim Lights</li> <li>– OS X Time Machine Support</li> <li>– Cloud access</li> </ul>
<b>BeyondRAID Features</b>	<ul style="list-style-type: none"> <li>– Thin Provisioning</li> <li>– Instant Expansion</li> <li>– Mixed Drive Size Utilization</li> <li>– Automatic Protection Levels</li> <li>– Single or Dual Disk Redundancy</li> <li>– Virtual Hot Spare</li> <li>– Data Aware</li> <li>– Drive Re-ordering</li> <li>– 64TB filesystem support</li> </ul>	<b>Size and Weight</b>	<ul style="list-style-type: none"> <li>– Desktop Form Factor</li> <li>– Width: 5.9 in (150.3 mm)</li> <li>– Height: 7.3 in (185.4 mm)</li> <li>– Depth: 10.3 in (262.3 mm)</li> <li>– Weight: 8.5 lb (3.9 kg) without hard drives, power supply or packaging</li> </ul>
<b>Management</b>	<ul style="list-style-type: none"> <li>– Drive bay indicator lights, capacity gauge, status lights</li> <li>– Drobo Dashboard version 2.8.1 or later</li> </ul>	<b>Power and Cooling</b>	<ul style="list-style-type: none"> <li>– External Power Supply: <ul style="list-style-type: none"> <li>• AC Input – 100-240VAC~2A, 50-60Hz</li> <li>• DC Output – 12V, 12.5A, 150W max</li> </ul> </li> <li>– Fixed, 120mm variable speed cooling fan</li> </ul>
<b>Operating System Support</b>	<ul style="list-style-type: none"> <li>– Mac OS X 10.9 and higher</li> <li>– Windows 8/8.1</li> <li>– Windows 7</li> <li>– Windows 10</li> </ul>	<b>Environmental Specifications</b>	<ul style="list-style-type: none"> <li>– Acoustics – Normal Operation: &lt;30.4 dB</li> <li>– Operating Temperature: 10°C – 35°C (50° – 95°F)</li> <li>– Non-Operating Temperature (storage): -10° – 60°C (14° – 140°F)</li> <li>– Operating Humidity: 5% – 80%</li> </ul>
<b>Network Protocols</b>	<ul style="list-style-type: none"> <li>– Common Internet File System (CIFS) / Server Message Block (SMB)</li> <li>– Apple Filing Protocol (AFP)</li> </ul>	<b>Box Contents</b>	<ul style="list-style-type: none"> <li>– Drobo 5N</li> <li>– 6 ft (1.8 m) Ethernet cable</li> <li>– 6 ft (1.8 m) power cord with power supply</li> <li>– Quick Start Card</li> </ul>
<b>Hardware Features</b>	<ul style="list-style-type: none"> <li>– Carrier-less drive bays</li> <li>– Power fail protection</li> <li>– Kensington Lock Port for security (lock not included)</li> </ul>		

## How to Choose the Right Drive

Drobo gives you the flexibility to use a wide variety of drive types and capacities. To find out which drive is right, visit [www.drobo.com/products/choose-drive](http://www.drobo.com/products/choose-drive).

## More Information

For more on Drobo's innovative technology, visit [www.drobo.com/how-it-works](http://www.drobo.com/how-it-works).

Read about Drobo BeyondRAID at [www.drobo.com/how-it-works/beyond-raid](http://www.drobo.com/how-it-works/beyond-raid).

For more on Drobo Apps, visit: [www.drobo.com/drobo-solutions/drobo-apps/](http://www.drobo.com/drobo-solutions/drobo-apps/)



2540 Mission College Blvd., Santa Clara, CA 95054 USA  
[www.drobo.com](http://www.drobo.com) • +1.408.454.4200